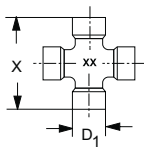
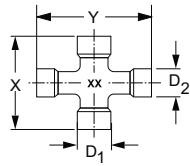


Identifizierungshilfe für Gelenkwellen

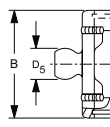
Kreuze W & P



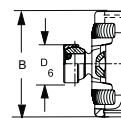
Kreuze WW & PW



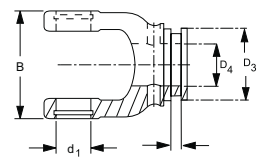
WW



PW

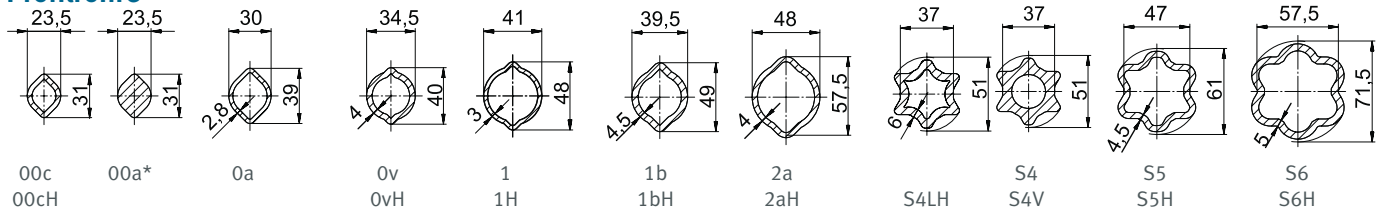


W & P

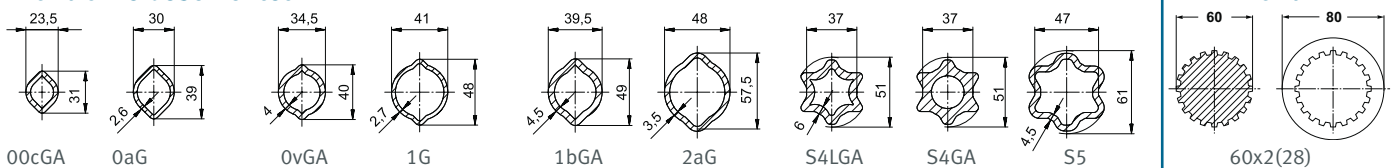


Bauart	Masse Kreuze							Masse Gabeln									
	Baureihe W+P (Power Drive)			Baureihe W+P				Baureihe W			Profil	Baureihe P					
	W	P	X	Y	D1	D2	XX	B	d1	C	D3	D5	D4	C	D3	D6	
W	W	2000		47		18		19	56	18	5	47		00c/0a			
		2100		55		22		10	63	22	5	47		00c/0a			
		2200		61		24		20	70	24	5	58		0v/1			
		2300	300	75		27		21	84	27	5	47		00c/0a			
	P	2400	400	76		32		35	86	32	5	58		0v/1			
		2500	500	89		36		36	100	36	5	70		1b/2a	5/11	85	
		2600	600	104		42		26	120	42	5	70		1b/2a	5/11	85	
		2700	700	118		50		27	138	50	5	70		S4LH/S5			
		800	135		53		28	155	50	5	90		S4/S5	11	85		
											70		S4/S5	16	104		
											90		S5H/S6	16	104		
											90		S5H/S6	16	104		
WW	W	2280		61	76	24	22	20	70	24	5	74	22	00cGA/0aG			
												58		0vGA/1G			
		2380		75	91	27	24	21	84	27	5	58	24	0vGA/1G			
	PW	2480	480	76	94	32	27	35	86	32	5	70	27	1bGA/2aG	5	70	33
		2580	580	89	106	36	32	36	100	36	5	70	30	S4LGA/S5	5	70	39
			675	104	124	42	36	26	120	42				S4GA/S5	5	70	39
													S4VGA/S5	5	70	39	
													S5H/S6	5/16	70	39	

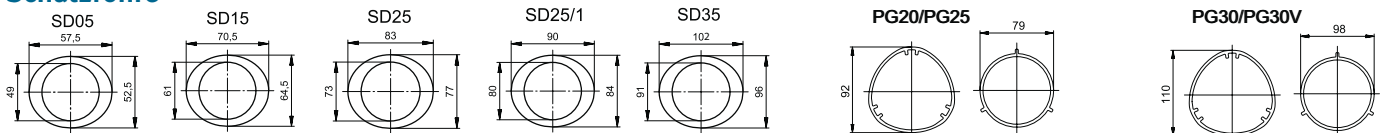
Profilrohre



Profilrohre beschichtet



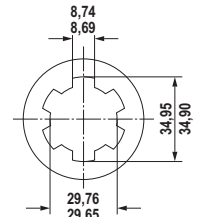
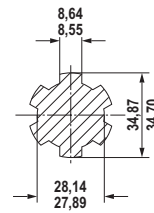
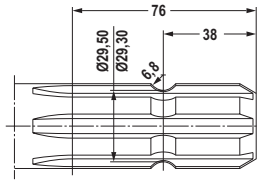
Schutzrohre



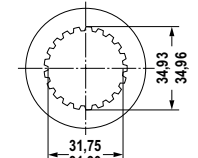
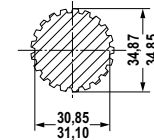
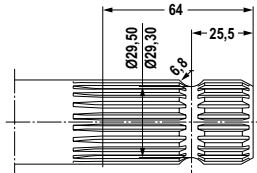
* Profilwelle 00a wurde durch Profilrohr 00c und 00cH ersetzt.

Identifizierungshilfe – Anschlussprofile

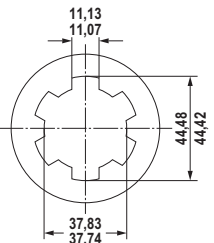
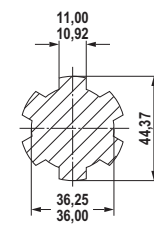
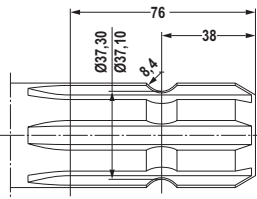
1 3/8" (6)



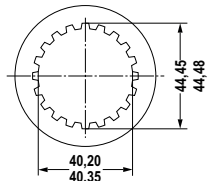
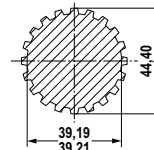
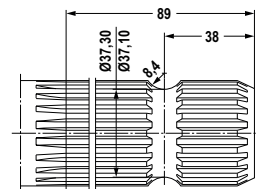
1 3/8" (21)



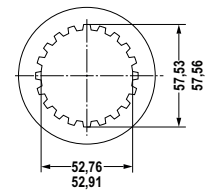
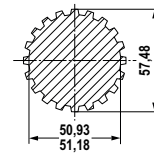
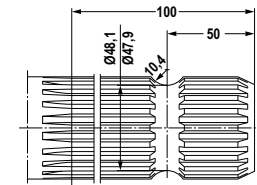
1 3/4" (6)



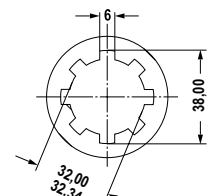
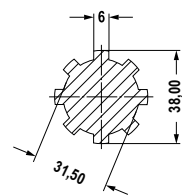
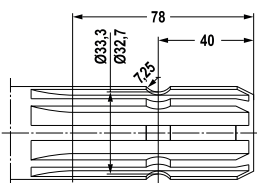
1 3/4" (20)



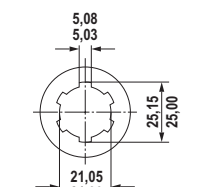
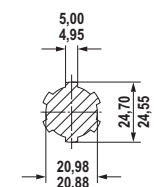
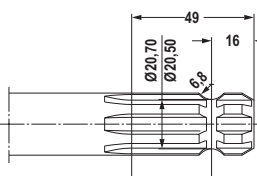
2 1/4" (22)



8 X 32 X 38



6 X 21 X 25



1 1/8" (6)

